

V VARDIS

SWITZERLAND

BIOMIMETIC DENTAL SCIENCE

CURODONT™ PROTECT

Remineralizing dental gel
for protection against
caries and sensitivity



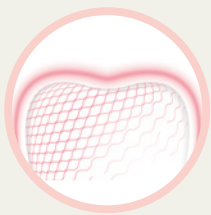
CURODONT™ PROTECT

Remineralizing dental gel for protection against caries and sensitivity

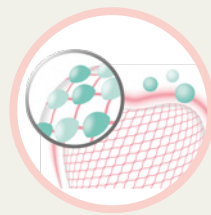


- Clinically proven, biomimetic P₁₁-4 Oligo-Peptide technology enriched with calcium, phosphate and fluoride*
- Protects from demineralization and promotes remineralization¹
- Clinically proven to significantly enhance enamel strength and hardness**^{2,3}
- Leaves teeth noticeably smoother and shinier^{3,4}
- Provides effective protection against caries during orthodontic treatments,¹ including aligner therapy
- Works synergistically with CURODONT™ REPAIR⁵
- Offers fast and long-lasting relief from dental sensitivity⁶
- Ideal before and after hygiene sessions, bleaching treatments, suitable for periodontal patients and for all patients
- Suitable for all patients aged 3 and up[†]
- Easy and convenient to apply at home or on the go

MODE OF ACTION



The biomimetic P₁₁-4 peptide technology, together with fluoride, calcium, and phosphate, forms a smooth, mineral-rich protective layer on the tooth surface.



CURODONT™ PROTECT acts on exposed dentin, helping to protect sensitive areas of the teeth.

Each CURODONT™ PROTECT box includes ten single-use 3 ml tubes, individually sealed.

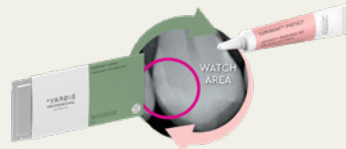
[†] The age limit of 6 years shown on the packaging complies with Swiss market regulations. This is because the same packaging is distributed in Switzerland, where regulatory requirements differ from those applicable in Italy.

INSTRUCTIONS



Enamel remineralization

- Caries prevention
- During orthodontic treatment
- After bleaching treatment
- For patients at high risk of caries



After CURODONT™ REPAIR treatment

Both in-office and at home



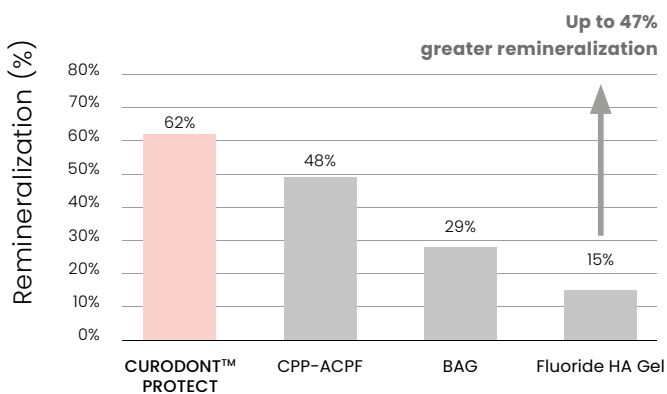
Desensitizing

- Patients with exposed tooth necks
- After hygiene sessions
- After bleaching treatments

SCIENTIFIC EVIDENCE

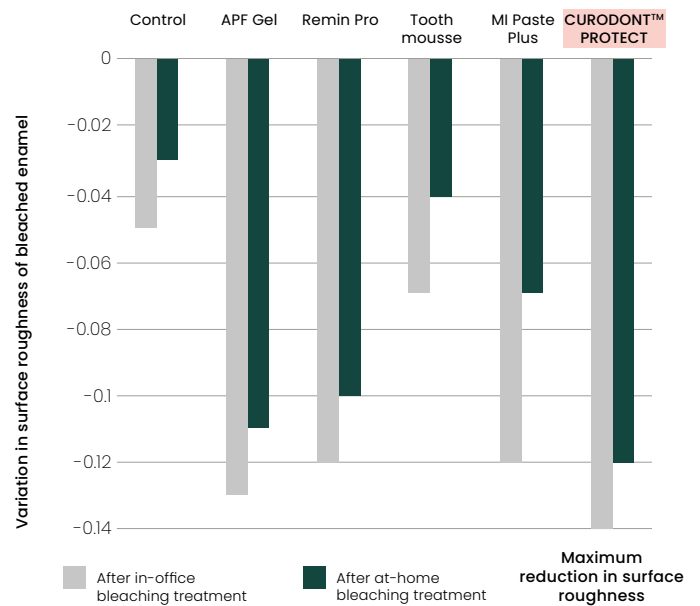
Increased enamel strength and hardness²

Surface microhardness analysis



CURODONT™ PROTECT has shown a significantly greater increase in enamel microhardness, indicating superior remineralization of enamel lesions compared to other tested agents.^{2**}

Reduction of surface roughness of bleached enamel⁴



CURODONT™ PROTECT shows a greater reduction in surface roughness after bleaching compared to other remineralizing agents.

Effective caries protection for orthodontic patients – clinically proven

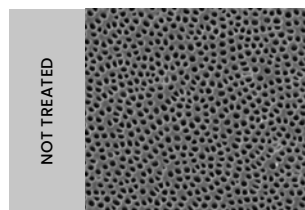
Clinical studies confirm that CURODONT™ PROTECT helps prevent the formation of early enamel caries, offering superior protection for patients with fixed orthodontic appliances compared to fluoride varnishes.¹

Superior remineralization after bleaching treatments – clinically proven***

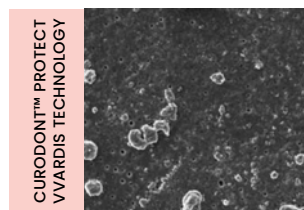
CURODONT™ PROTECT provides effective remineralization following bleaching treatments. Clinical studies have shown that CURODONT™ PROTECT helps restore surface smoothness and enamel hardness after bleaching.^{3,4}

Effective protection of exposed dentinal tubules

Scanning electron microscope images (2000x)⁵



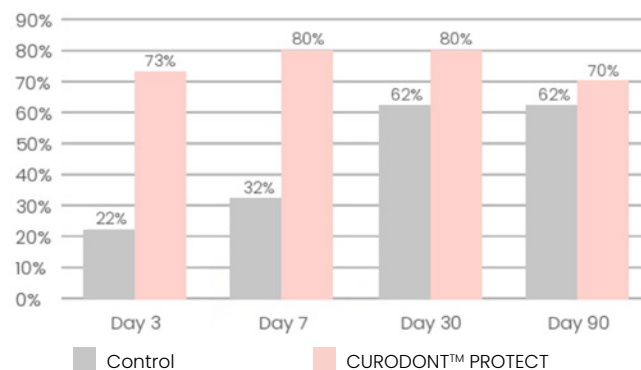
Exposed dentin with open tubules



Dentin with CURODONT™ PROTECT – stable protective barrier developed after a single application

Significant immediate and long-lasting reduction in sensitivity in 70% of patients⁷

% of patients – 7 days of product application



Effective protection against sensitivity – clinically tested

CURODONT™ PROTECT provides almost complete coverage of dentinal tubules and achieves a greater reduction in both the number and diameter of open tubules compared to leading desensitizing toothpastes.⁶

Clinical studies on patients confirm that CURODONT™ PROTECT offers fast and lasting protection for sensitive teeth:

- 73% of participants experienced relief after 3 days.⁷
- Even after stopping application on day 7, CURODONT™ PROTECT helped prevent sensitivity for up to 90 days in 70% of participants.⁷

HOW TO APPLY CURODONT™ PROTECT

AT HOME

For enamel remineralization

Apply once or twice a week, preferably in the evening, after brushing your teeth.

After treatment with CURODONT™ REPAIR

Apply once or twice a week, after brushing your teeth before bedtime, until the tube is finished.

For sensitivity protection

Apply once or multiple times daily until discomfort is reduced.



IN OFFICE

For enamel remineralization

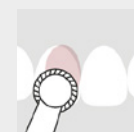
At the end of the dental procedure, apply over the entire tooth surface.

After treatment with CURODONT™ REPAIR

Wait 5 minutes, then apply to the treated area and the rest of the dentition.

For sensitivity protection

Apply 2 minutes before and immediately after professional cleaning, bleaching, or any invasive treatment on sensitive teeth.



1. Jablonski-Momeni A et al. Sci Rep 2019;9:269 | 2. Soares R et al. J Clin Diagn Res 2017;11:ZC136-ZC141 | 3. Magalhães GAP et al. J Funct Biomater 2022;13:79. | 4. Bilge K, Kılıç V. Microsc Res Tech 2021;84:2206-2218 | 5. Doberdoli D et al. Sci Rep 2020;10:4195 | 6. Hill R et al. J Dent Maxillofacial Res 2020;3:1-11 | 7. Schlee M et al. J Periodontol 2018;89:653-660 | * 900 ppm of fluoride | ** Curodont™ Protect vs. casein phosphopeptide-amorphous calcium phosphate (CPP-ACPF), bioactive glass (BAG), and fluoride-enhanced hydroxyapatite (HA) gel | *** vs. 9000 ppm sodium fluoride