



vVARDIS

# Enamel Serum

## Post-hygiene enamel care

The vVARDIS Enamel Serum, enriched with peptides and hydroxyapatite, delivers calcium and phosphate ions to care for the enamel and promote a healthy, glossy appearance.

- Helps maintain the mineral balance of the enamel surface<sup>1</sup>
- Leaves teeth feeling smooth and clean
- Visibly brightens the appearance of enamel<sup>1</sup>
- Gives a shiny, glossy effect
- Helps care for sensitive teeth<sup>2</sup>
- Fluoride-free
- Works with veneers, crowns and white fillings



## Indications



### Ideal finishing to dental hygiene appointments

Supports the mineral balance of the enamel, while providing gentle care for sensitive teeth. Enhances results of the dental hygiene.



### Premium treatment enhancer

Brightens the enamel appearance and gives a shiny effect – works also on veneers, crowns and white fillings.

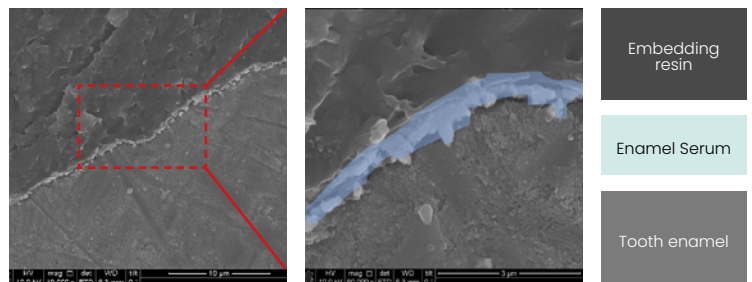
## Mode of Action

The vVARDIS technology adheres to the enamel and stabilizes the hydroxyapatite on the enamel surface.

It creates a protective, stable hydroxyapatite-rich reservoir, that delivers calcium and phosphate ions and which:

1. Provides a natural brightening effect for an even smile
2. Helps maintain mineral balance of the enamel surface
3. Smoothens the enamel

### SEM imaging of the peptide-rich protective layer:



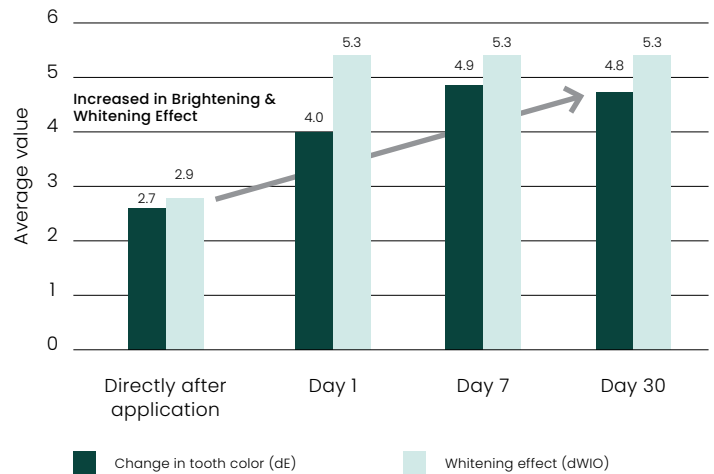
Morphological investigation of natural human enamel after treatment with the Enamel Serum. Cross sectioning the tooth revealed a layer of serum on the enamel surface (highlighted in blue).

## Significantly brightening and gentle whitening<sup>3</sup>

Optical brightening due to diffuse reflection of light by the HA-rich layer on enamel surface.

- In vitro and in vivo study
- Enamel serum used for 7 days
- Significant brightening progressively until day 7, stayed significantly higher than baseline until day 30.
- Brightening effect independent of initial tooth shade.


Laboratory measurement differences relative to baseline




1. Hojabri N et al. Clin Oral Investig. 2021;25:3237-3247. | 2. Data on file | 3. Bommer C et al. J Clin Dent. 2018;29:57-63


## Easy Application

vVARDIS Enamel Serum can be applied by a dental professional during the in-office cleaning appointment, or by the patient at home following the instructions below:


- 


For best results, use immediately after oral prophylaxis in office. Apply the serum for one week at home before going to bed.
- 

Pull back the lips and lightly dry teeth.



Using the included applicator brush, apply a thick layer of the enamel serum on each tooth (including on porcelain veneers and crowns), making sure to extend the gel over the gum line.  
10 s
- 

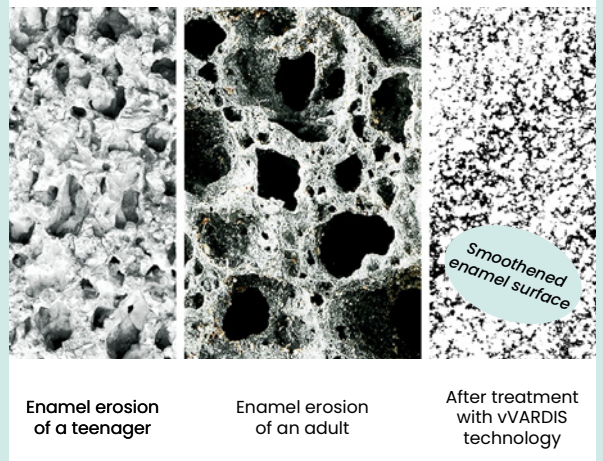
Once applied, do not rinse. Spit out any residue if necessary. Avoid eating or drinking for at least 30 minutes.
- 

Enamel serum can be applied directly in aligner trays prior to placement.
- 

Apply the serum for a week after the hygiene appointment.



Microscope Views



M10283